

Logitech Lift Vertical Mouse

User Guide

A hand is shown using a pink Logitech Lift Vertical Mouse on a white desk. In the background, there is a pink keyboard, a white coffee cup on a saucer, a glass pitcher of coffee, and a pink mug with a plant. A green plant is visible on the right side of the desk.

lift yourself up

with Lift Vertical Ergonomic Mouse

PICKADO

Author: Flavia Dragan

January 2025

Contents

1.	Introduction	4
2.	About the product	4
3.	Functions and technical specifications	5
	3.1 Functions	5
	3.2 Technical specifications	6
	3.3 Customization	9
4.	Installation and Set up	9
	4.1 Connect your mouse to your device	9
	4.2 Connect using Bluetooth	9
	4.3 Connect using the Logi Bolt USB receiver	9
5.	Product Features	10
	5.1 Ergonomic vertical shape	10
	5.2 Logitech SmartWheel	11
	5.3 Back/Forward buttons	11
	5.4 High-precision sensor and cursor speed switch	11
	5.5 Easy-Switch	11
	5.6 Power Management	12
	5.7 Logitech Options+	12
	5.8 Flow between two computers	12
	5.9 Smart Actions in Logi Options+	13
6.	FAQ	16
7.	Troubleshooting	16
	7.1 Resolve Bluetooth wireless issues on Windows 11	16
	7.1.1 Make sure you have the latest version of Windows	17
	7.1.2 Make sure you have the latest Bluetooth drivers	17
	7.1.3 Make sure Bluetooth is turned ON on your computer	18
	7.1.4 Restart Bluetooth on your computer	18
	7.1.5 Remove your Logitech device from the list of devices and try to pair again	19
	7.1.6 Run the Windows Bluetooth troubleshooter	19
8.	Glossary	21

9. Resources..... 21

1. Introduction

Using an ergonomic mouse instead of the old classic one can make a huge long-term difference in the health of hand and wrist mobility. Ergonomic mice help combat users' hand and wrist fatigue. The health problems of people working many hours daily in front of a laptop, using the mouse, are increasingly common. Carpal tunnel syndrome has spread considerably lately in the age of technology. Therefore, more ergonomic mice began appearing on the market, such as the one from Logitech Lift Vertical Mouse.



2. About the product

- Logitech provides the best combination of comfort, features, and value for most people.
- This mouse's vertical design positions the hand at a comfortable 57-degree angle. It is easy to handle and use, and it is intended for people with small and medium hands.
- Logitech Lift Vertical Mouse is available in several colors: white, graphite, and pink, and is intended for both right-handed and left-handed users.

How is it different than other mice on the market?

- Lift Vertical Ergonomic Mouse has been designed for day-long comfort. The unique 57-degree angle of Lift elevates your hand, taking the pressure off your wrist and realigning your forearm into a more relaxed, natural position.

LIFT Vertical Mouse Components

LIFT at a glance



1. SmartWheel
2. Cursor speed switch button (adjusts the cursor speed)
3. Textured rubber grip
4. Easy-Switch and Connect button (pairing with up to three different devices)
5. High precision sensor
6. On/Off button
7. Magnetic battery door
8. Logi Bolt receiver
9. AA battery
10. Back/Forward button

3. Functions and technical specifications

3.1 Functions

- The Logitech mouse has a total of 6 buttons, including the left-right click, a scroll wheel with a pressing function, a DPI* sensitivity adjustment button, and two thumb buttons.
- The main click buttons are silent, but they have the receptivity speed of the command.
- The scroll wheel can switch between fast and more precise scrolling with just a quick click.

3.2 Technical specifications

Dimensions

When selecting a computer mouse, one of the key factors to consider is its dimensions, as the size and shape of the device can significantly impact comfort and usability. Logitech Lift Vertical Mouse has the following dimensions:

- Height: 4.25 in (108 mm)
- Width: 2.7 in (70 mm)
- Depth: 2.8 in (71 mm)
- Weight: 4.4 oz (125 g)

Part Number

The part number of a computer mouse is a unique identifier assigned by the manufacturer to a specific model or version of the mouse. This number helps distinguish between different models, configurations, and features of mice within a brand's product lineup.

- Graphite Lift Left: 910-006467
- Off-white Lift: 910-006469
- Rose Lift: 910-006472
- Graphite Lift: 910-006466

Sensor Technology

In the world of computer mice, sensor technology plays a pivotal role in determining the precision, responsiveness, and overall performance of the device. The sensor is responsible for translating the physical movement of the mouse into digital input on the screen, making it one of the most critical components in ensuring an accurate and smooth user experience.

- Sensor Type: Logitech Advanced Optical Tracking
- DPI* range: 400-4000 dpi (Fully adjustable with 100DPI increments)
- Nominal value: 1000 DPI*

Buttons

The buttons on a computer mouse are essential components that facilitate user interaction, allowing for a variety of commands and functions to be executed with a simple click. Whether you are browsing the web, working on a project, or gaming, the design, placement, and functionality of the mouse buttons can have a significant impact on your overall experience.

- **Number of buttons Logitech Lift Vertical Mouse:** 6 (Left/Right-click, Back/Forward, Middle button, Scroll-wheel with middle click)

Customization app

Many computer mice, especially gaming and high-end models, come with software that allows users to customize their mouse's settings and button functions. These customization apps enable you to adjust features such as DPI sensitivity*, assign macros, and modify button functions.

- Supported by Logi Options+ on Windows and macOS

Battery

The battery is a crucial element in the design and functionality of wireless mice, determining not only how long the device can operate without needing to be recharged or replaced but also its overall efficiency and convenience. Whether it's a rechargeable battery or a disposable one, the type and capacity of the battery significantly affect a mouse's performance and its ability to deliver consistent, uninterrupted use.

For this type of mouse you will need:

- Battery type: 1x AA battery (included)
- Battery life: up to 24 months. Battery life may vary based on user and computing conditions.

Connection type support

The connection type of a mouse is one of the most important factors that determines how it interfaces with your computer or device. Whether it's a wired connection, a wireless USB receiver, or Bluetooth technology, the way a mouse connects influences its performance, range, and ease of use. Different connection types offer unique advantages, such as the reliability of a wired connection for uninterrupted performance, the flexibility of wireless options for clutter-free setups, and the convenience of Bluetooth for compatibility with a wide range of devices.

- Logi Bolt USB receiver (included)
- Bluetooth® Low Energy Technology

Wireless range

The wireless range of a mouse is an essential factor that determines how far the device can communicate with its receiver without losing signal quality or responsiveness. Whether using a 2.4 GHz wireless receiver or Bluetooth, the range impacts the overall flexibility and mobility of the mouse, especially in larger workspaces or when paired with devices at a distance. A mouse with a greater wireless range provides users with more freedom to move without worrying about disconnections or lag.

- Logitech Lift Vertical Mouse provides a 32.8 ft (10-m) wireless range 3Wireless range may vary depending on the operating environment and computer setup.

Sustainability

Manufacturers are now looking for ways to minimize their environmental footprint, from using eco-friendly materials and reducing waste, to implementing energy-efficient technologies and adopting responsible manufacturing practices. In the case of wireless mice, sustainability also extends to battery life and recyclability, with some companies offering longer-lasting rechargeable batteries or creating products with greater emphasis on end-of-life recyclability. For the **Logitech Lift Vertical Mouse** were used the following:

- Graphite plastics: 70% post-consumer recycled material
- Off-white and Rose plastics: 54% post-consumer recycled material
- Paper Packaging: FSC™-certified and recyclable

Warranty Information

Logitech, known for its innovation and durability in peripheral design, offers various warranty options depending on the mouse model, typically covering defects in materials and workmanship.

- Logitech Lift Vertical Mouse: 1-Year Limited Hardware Warranty

Compatibility

Logitech Lift Vertical Mouse has the ability to work with different operating systems, devices, and hardware configurations.

Bluetooth® Low Energy

- Windows 10, 11 or later
- macOS 10.15 or later
- iPadOS 14 or later
- ChromeOS™
- Linux®
- Android™ 8 or later
- Engineered for Intel® Evo™ Laptops

Logi Bolt USB Receiver

- Required: Available USB Port
- Windows 10, 11 or later
- macOS 10.15 or later
- ChromeOS 11
- Linux 19

Note!

- ChromeOS users should connect over Bluetooth for the best experience.
- Internet access is required to download the optional customization app Logi Options+.

3.3 Customization

Logitech Vertical Mouse allows the customization of the 4 auxiliary buttons through the Logi Options+ software available for both MAC and PC, giving you the freedom to assign various quick commands or key presses (for example mute microphone or copy/ paste text).

4. Installation and Set up

The mouse can pair with up to 3 devices simultaneously, using a combination of Bluetooth and the included Logi Bolt USB receiver – which can support up to 6 Logitech accessories – making it easy to move from one computer to another and from one tablet to another during the working day.

4.1 Connect your mouse to your device

You can pair your LIFT mouse to your device through a Bluetooth® Low Energy connection or through our new Logi Bolt* receiver.

4.2 Connect using Bluetooth

1. Make sure the battery pull tab is removed and your LIFT is turned on.
2. Press the Easy-Switch button and select the channel you want to pair to. (Make sure the LED is blinking fast. If it's not, press and hold the button for 3 seconds).
3. Open the Bluetooth setting on your computer:
4. On MacOS: Open System preferences > Bluetooth > Add LIFT.
5. On Windows: Select Start > Settings > Devices > Add Bluetooth device > Add LIFT.
6. Connected.

4.3 Connect using the Logi Bolt USB receiver

1. Open the battery door and take out the Logi Bolt receiver.
2. Plug the Logi Bolt receiver into a USB-A port on your computer.
3. Remove the pull tab and make sure LIFT is turned on.
4. Press the Easy-Switch button and select the channel you want to pair to.

5. Connected.

5. Product Features

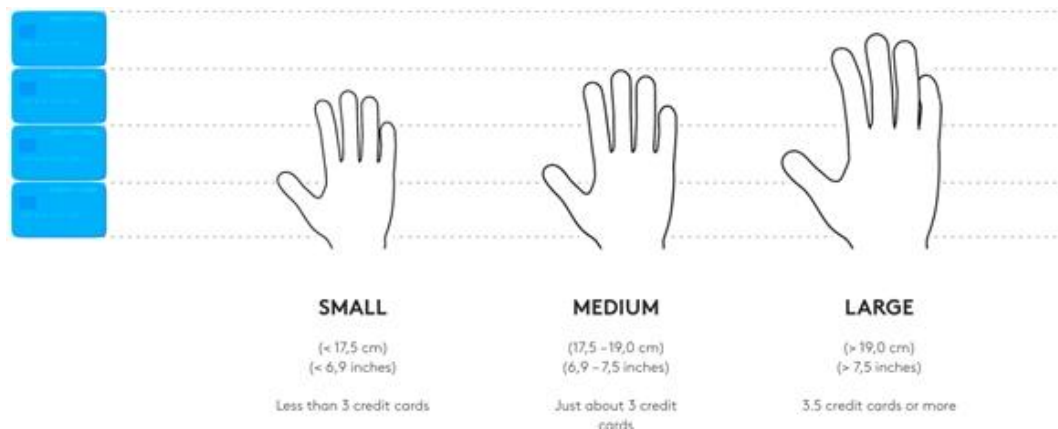
5.1 Ergonomic vertical shape

LIFT vertical mouse is designed to help you work better. The vertical design lifts your hand, wrist, and forearm up into a more natural posture through a unique 57-degree vertical angle.

The textured rubber panel provides a soft, comfortable feel while providing a good grip. To get the best experience, try to keep your wrists straight and your hand in a natural, relaxed position while using.



LIFT was designed especially for people looking for a small-to-medium-sized fit for their hands. If you do not know your hand size, we can help you. Please see below to determine your hand size:



5.2 Logitech SmartWheel

LIFT features SmartWheel scrolling that delivers precision or speed when needed. The magnetic wheel lets you seamlessly switch between two scrolling styles with the flick of your finger.

- Line-by-line (ratchet) scroll — Get line-by-line precision when you need to focus on the details. Scroll slowly, you will feel each step on the wheel. Ideal for reading or precise navigation of items and lists.
- Speed (inertia) scroll — scroll faster for less-friction spinning. It will let you scroll faster and with less effort through long documents and web pages.

5.3 Back/Forward buttons

The back and forward buttons enhance navigation and simplify tasks.

To move back and forward, press the back or forward button to navigate web or document pages, depending on the location of the mouse pointer.

Logitech software lets you assign other useful functions to the buttons, including undo/redo, OS navigation, volume up/down, and more.

5.4 High-precision sensor and cursor speed switch

LIFT has an advanced high-precision sensor with 4000 adjustable DPI and an instant DPI Switch.

DPI Switch

The cursor speed switch allows you to toggle between two cursor speeds with the press of a button.

- Cursor speed 1: 1000 DPI
- Cursor speed 2: 1600DPI

With Logitech Options you will receive an on-screen notification when switching between cursor speed 1 and cursor speed 2.

You can also fully customize the speed to your needs. Press and hold the cursor speed switch until the overlay appears and then simply move the mouse left or right to adjust the speed.

5.5 Easy-Switch

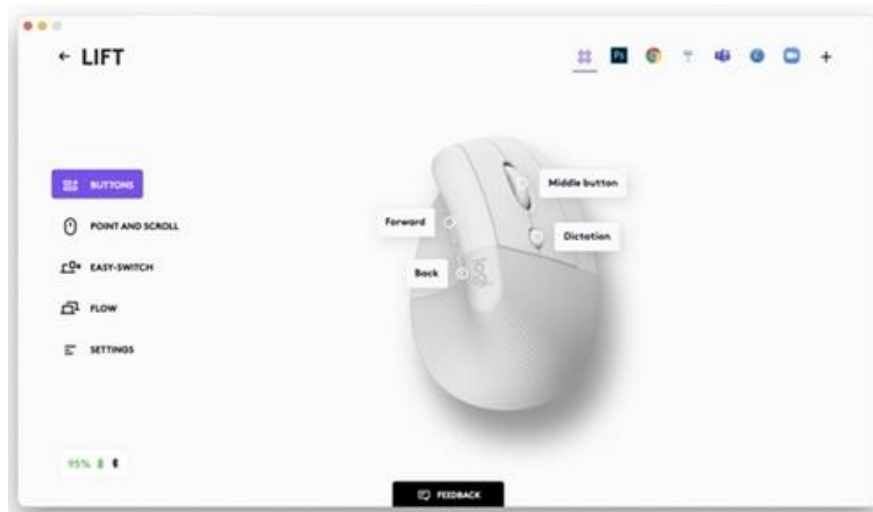
- LIFT can connect up to three devices and seamlessly switch between them with a press of a button.
- The Easy-Switch button is located on the bottom of the mouse.

5.6 Power Management

- LIFT is powered by one AA battery.
- Battery life: Up to 24 months

5.7 Logitech Options+

LIFT is supported by Logitech Options+. Logi Options+ Beta is a next-gen app that lets you manage and customize your supported mice and keyboards — so they all seamlessly work toward your goals. Combining the best features of Options with a brand-new easy-to-use interface, Options+ Beta is designed to transform your daily tasks.



5.8 Flow between two computers

You can work on multiple computers with one single mouse.

With Logitech Flow, you can use the mouse cursor to move from one computer to the next. You can even copy and paste between computers, and if you have a compatible Logitech keyboard, the keyboard will follow the mouse and switch computers at the same time.

You will need to install [Logitech software](#) on both computers and follow [these instructions](#).

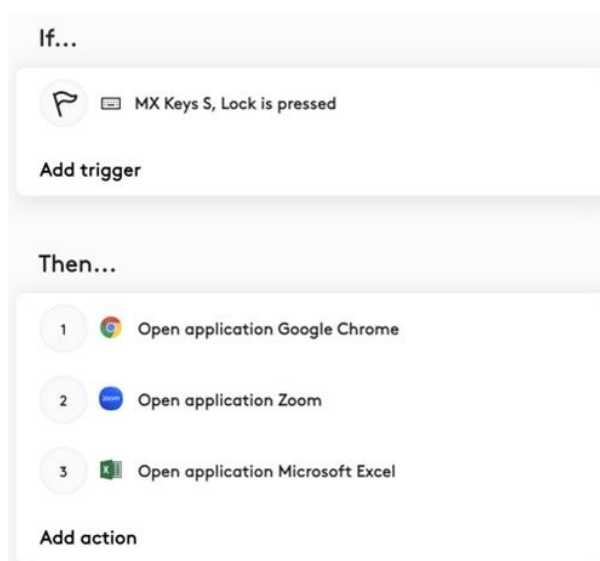


5.9 Smart Actions in Logi Options+

What are Smart Actions

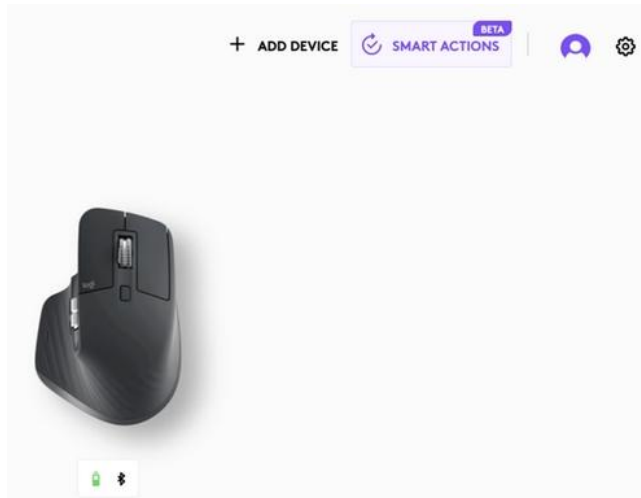
Smart Actions allows you to automate your repetitive tasks and is one of the latest features in the Logi Options+ app. Smart Actions consist of triggers and actions. Once triggered, Smart Actions will execute a chain of actions automatically.

In this example, by pressing the Lock key on your MX Keys S, three applications will open: Google Chrome, Zoom, and Microsoft Excel.

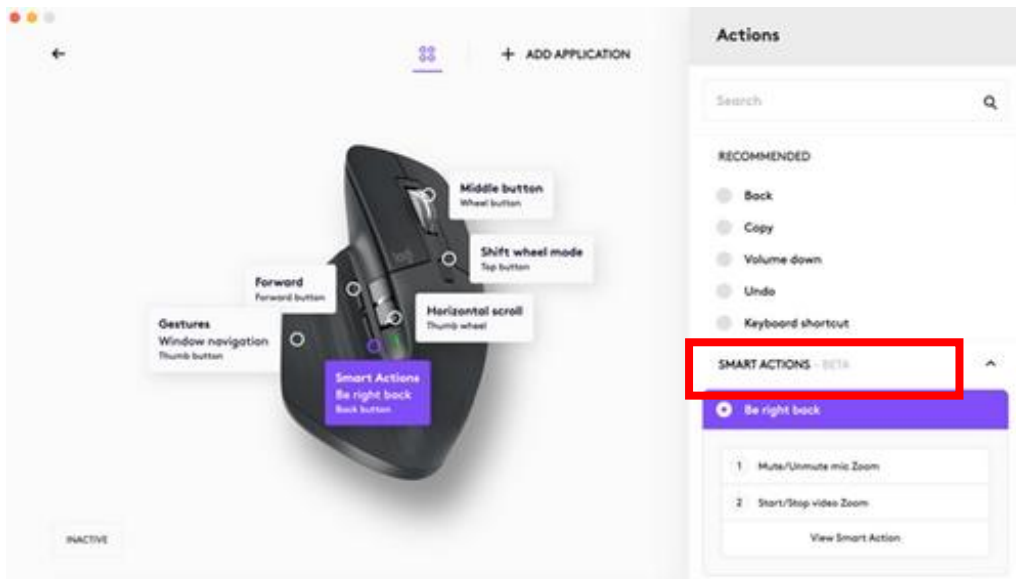


How do I access Smart Actions in Logi Options+

You can find Smart Actions on the top right corner of the Logi Options+ home screen.



Smart Actions are also available for assignment on the **Device** page below the **Recommended** section.



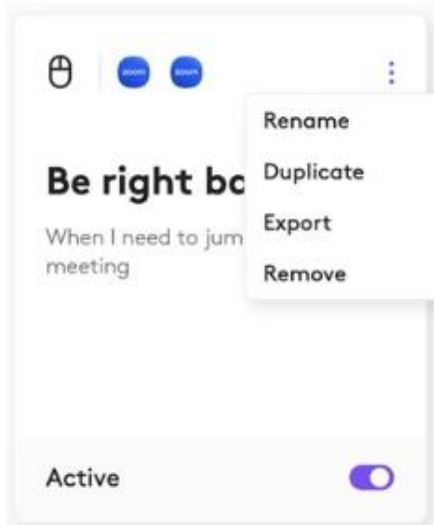
Manage Smart Actions in Logi Options+

You can do the following with Smart Actions on your Manage tab.

Use the toggle on the bottom of the card to turn off the Smart Action. When you create a Smart Action, it's active by default — it will be executed as soon as you trigger it. To turn it off, click on the toggle.

Use the context menu on the top right corner of the Smart Actions card. There are four options:

- Rename the Smart Action — change the name and the description.
- Duplicate creates a copy of current Smart Actions.
- Export lets you save your Smart Actions as a .json file. You can share this file with your colleagues and friends so that they can use the Smart Actions that you have created.
- Remove lets you permanently delete your Smart Actions from your list.



6. FAQ

1. What is the range of hand sizes that fit Lift?

Lift is a great fit for small- to medium-sized hands. It's specially designed to fit women's right and left hands but is also ideal for men with smaller hands. Should you need a mouse for larger hands, Logitech has the MX Vertical.

2. Does Lift require batteries?

Yes, the Lift Vertical Ergonomic mouse comes with one AA battery, which will last up to two years.

3. Does Logitech offer a left-handed version of Lift?

Yes, Lift is available in a left-handed version in our graphite color (North America and Europe only).

7. Troubleshooting

7.1 Resolve Bluetooth wireless issues on Windows 11

Please follow the steps in order and check if the device works after each step.

If you are having trouble connecting to Bluetooth on Windows 11:

1. Navigate to **Bluetooth & Devices > Devices > Device Settings > Bluetooth Devices Discovery**.
2. Change the setting from Default to **Advanced**.



3. This should allow your Logitech device to be discoverable in the Bluetooth list.

7.1.1 Make sure you have the latest version of Windows

Microsoft is regularly improving the way Windows handles Bluetooth devices. Check to make sure you have installed the latest updates.

- Click **Start**, then go to **Settings > Windows Update**, and select **Check for updates**. See Microsoft for more details on how to update Windows. If prompted, you should also include the optional updates related to Bluetooth, Wi-Fi, or radio.

7.1.2 Make sure you have the latest Bluetooth drivers

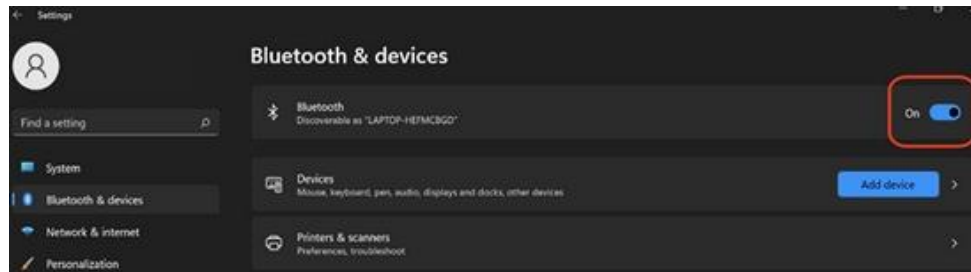
Computer manufacturers are regularly improving the way they handle Bluetooth devices. Make sure you install the latest Bluetooth drivers from your computer manufacturer:

- **Lenovo computers**
 1. Click **Start**, and then go to Lenovo Vantage* (formerly Lenovo Companion), and select **System Update**. Then select **Check for Updates**.
 2. If there is an update available, click **Install selected**. Optional updates are not required but are recommended.
- **HP computers**
 1. Click **Start > All apps** and then go to HP Support Assistant or search for support assistant.
 2. In the **Devices** window, select your HP computer and click on **Updates**. Optional updates are not required but are recommended.
- **Dell computers**
 1. Click **Start**, and then go to **Dell Command | Update** and select Check. You can also go to the Dell support page and scan your system for new updates.
 2. If there is an update available, select **Install**. Optional updates are not required but are recommended.
- **Other computers**

Check the product support page of your computer manufacturer's website to see how to update your system.

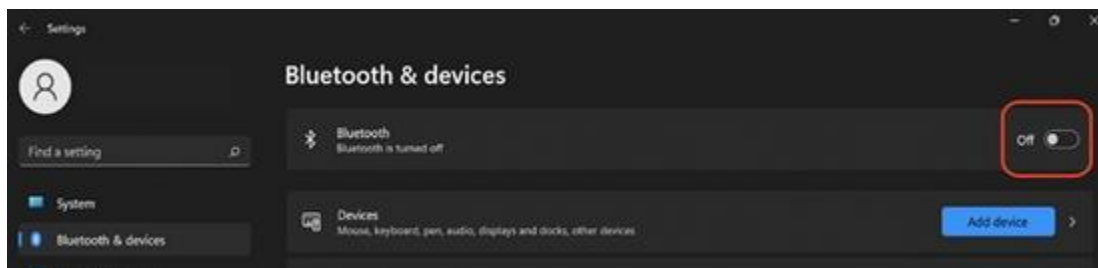
7.1.3 Make sure Bluetooth is turned ON on your computer

Click **Start**, then select **Settings > Bluetooth & devices**. Make sure Bluetooth is turned **ON**. If you're using a laptop with a Bluetooth switch, make sure the switch is turned on.

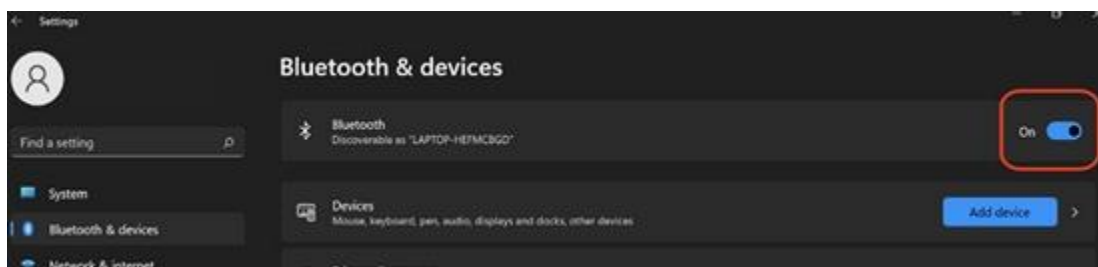


7.1.4 Restart Bluetooth on your computer

1. Navigate to the Bluetooth settings pane:
2. Click **Start > Settings > Bluetooth & devices**.
3. Click on the Bluetooth switch to turn Bluetooth **Off**.



4. Wait a few seconds and then click on the Bluetooth switch to turn Bluetooth **On**.



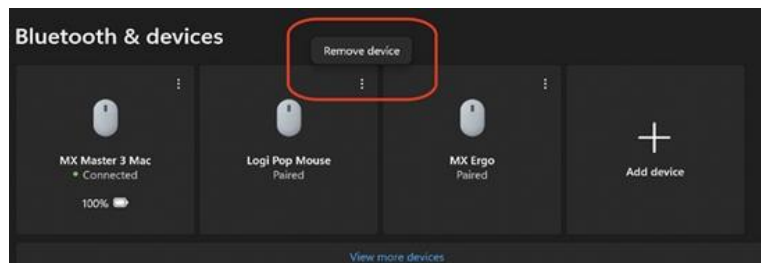
5. Check to see if the Logitech Bluetooth device is working. If not, go to the next steps.

7.1.5 Remove your Logitech device from the list of devices and try to pair again

Navigate to the Bluetooth Settings pane:

Click Start > Settings > Bluetooth & devices.

Locate your device, click on the menu icon in the right corner and then select Remove device.



In the next prompt, click on **Yes**.

Are you sure you want to remove this device?



Re-pair your device by following the procedure described in this manual in chapter 4.1 *Connect your mouse to your device*.

7.1.6 Run the Windows Bluetooth troubleshooter

Click **Start**, then select **Settings > Troubleshoot > Other troubleshooters**. Under **Other**, find **Bluetooth**, click on **Run**, and follow the onscreen instructions.

Advanced: Changing Bluetooth Parameters

1. In Device Manager, change the Bluetooth wireless adapter power settings:
 - In the search box on the taskbar, type Device Manager, then select from the menu.

2. In Device Manager, expand **Bluetooth**, right-click on the Bluetooth wireless adapter (ex. “Dell Wireless XYZ adapter”, or “Intel(R) Wireless Bluetooth”), and then click **Properties**.
3. In the Properties window, click the **Power Management** tab and uncheck **Allow the computer to turn off this device to save power**.
4. Click **OK**.
5. Restart your computer to apply the change.

8. Glossary

DPI – dots per linear inch; the standard used to measure the mouse sensitivity, expressed as the number of DPIs (dots per linear inch). By changing the DPI, you can instantly adjust pointer speed for precision tasks, such as in-game targeting or photo editing.

Logi Bolt - a cutting-edge wireless protocol, engineered to meet rising enterprise security expectations. Learn more about it here.)

9. Resources



Resources

1. About the product: <https://www.logitech.com/en-us/products/mice/lift-vertical-ergonomic-mouse.html?srsId=AfmBOooiAomg4tITYesTInONzDjPCLv5ufmOS2EYIkeTw5bh2o3wKUzq>
2. Buy the product: https://www.vexio.ro/mouse/logitech/1135745-lift-right-vertical-usb-wireless-graphite/?gad_source=1&gclid=Cj0KCQiAqL28BhCrARIsACYJvkfXhetDg-APVNFViEuDynf4Pc9AgFe6K-LFIsXNkVmZeVk_58RpjScaAgIYEALw_wcB